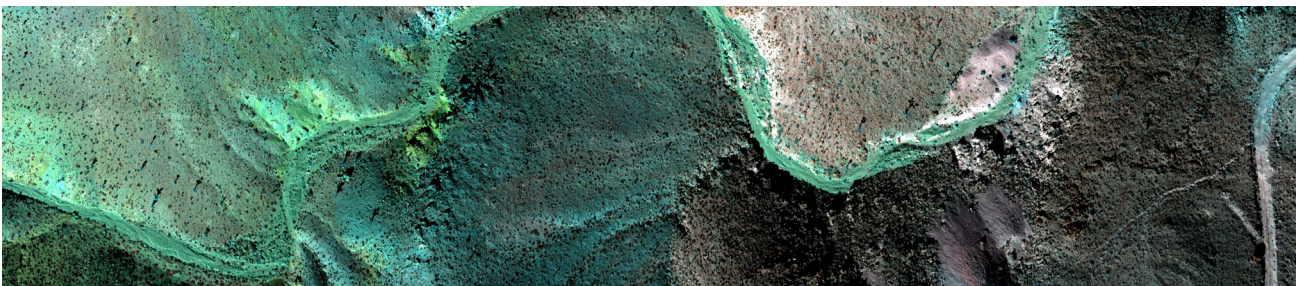
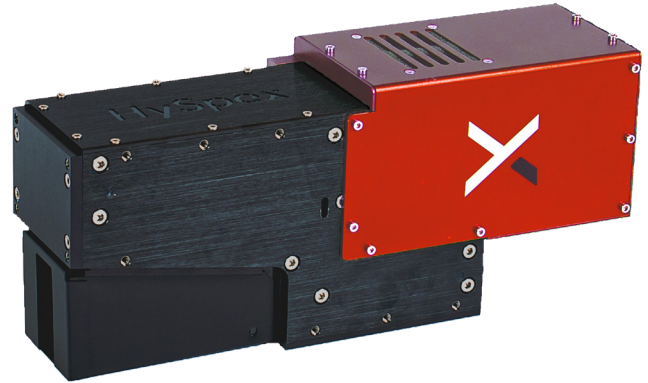


HySpex SWIR-640

The HySpex SWIR-640 hyperspectral camera delivers unique performance, utilizing a cutting-edge MCT sensor for high spatial resolution. The FPA is cooled to an ultra-low temperature of 150K using a sterling cooler, ensuring minimal background noise, high dynamic range, and exceptional signal-to-noise ratios. The camera has an aberration-corrected optical system with high optical throughput (f/2.3), resulting in unmatched data quality, sensitivity, and resolution.

Its versatility is further enhanced by an array of close-up lenses, enabling use at working distances from a few centimeters (with a spatial resolution of 32 μm) to infinity for applications like airborne remote sensing.



MAIN SPECIFICATIONS	
Spectral range	960-2500 nm
Spatial pixels	640
Spectral channels	362
Spectral sampling	4.3 nm
F-number	f/2.3
FOV*	15.8°
Pixel FOV across/along*	0.43/0.43 mrad*
Bit resolution	16 bit
Noise floor	LG: 350 e- HG: 80e-
Dynamic range	LG: 3650 HG: 1850
Peak SNR (at full resolution)	LG: >1050 HG: >350
Max speed (at full resolution)	225 fps
Power consumption	10 W
Dimensions (l-w-h)	360 - 110 - 150 mm
Weight	4.1 kg
Camera Interface	CameraLink

*Can be doubled with FOV expander