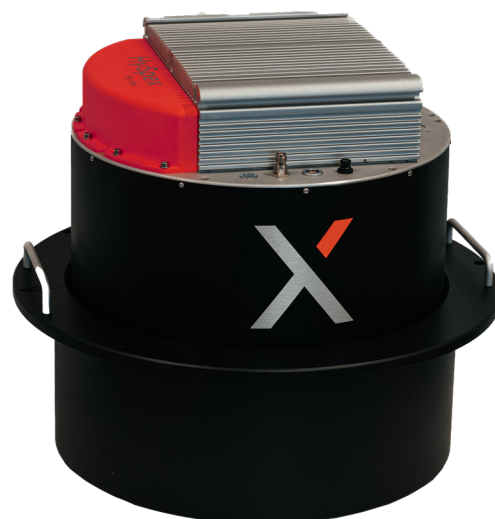


# HySpex VS-1200

The HySpex VS-1200 is a novel high-resolution instrument designed for airborne applications at altitudes greater than 400m.

The camera produces the highest scientific grade level data commercially available, having FWHM less than 1.2 pixels spatially and less than 1.5 pixels spectrally. The combined VNIR-SWIR cube has co-registration errors and smile and keystone distortions of less than 10% of a pixel.

With 40 degrees FOV, the camera is ideal for mapping large areas with high accuracy and resolution



MAIN SPECIFICATIONS	V-2400	S-1200
Spectral range	400-1000 nm	950-2500 nm
Combined spectral range	400-2500 nm	
Spatial pixels	2400	1200
Combined spatial pixels	1200	
Spatial resolution	FWHM < 1.2	
Spectral channels	400/200	300
Combined spectral channels	680/490	
Spectral resolution (pixels)	FWHM < 1.5 (in 400 band mode)	FWHM < 1.5
F-number	F1.8	F1.9
FOV	40°	40°
Combined FOV	40°	
Pixel FOV across/along	0.27/0.54 mrad	0.54/0.54 mrad
Combined pixel FOV across/along	0.54/0.54 mrad	
Bit resolution (raw data)	12 bit	16 bit
Noise floor	2.4 e-	80 e-
Dynamic range	4400	10000
Max speed (at full resolution)	250 fps	170 fps
Power consumption*	150 W	
Dimensions (ø-h)*	373-398 mm	
Weight	~35 kg	

\*Including Data Acquisition Unit